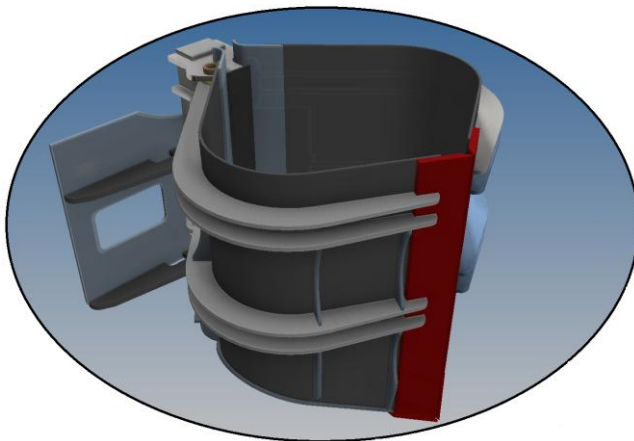


The Strimech Mighty-Bite Bucket

Strimech's Mighty-Bite attachment is designed for the low density waste sector and is ideal for handling materials such as paper, plastic, tin cans and aluminium waste. The heavy duty design and excellent build quality guarantee's it's both powerful and durable which offers a longer working life. The Might-Bite is uniquely designed to eliminate tipping issues thus eradicating the need to use telehandlers.



- Option for bolt on teeth.
- Replacement bolt-on nylon wear pads.
- Machine capacity up to 4 tonnes.
- Can be used as a scrapper blade.
- Ideal for JCB Teletruk or masted trucks.

To see a Mighty-Bite in action please visit the Strimech attachments page on YouTube or search "Strimech Mightybite"



PLEASE NOTE: Jumper hoses and couplings are not supplied and are available at an extra cost



Strimech Engineering Limited Longmore Avenue, Bentley, Walsall, WS2 0BW
T: 01922 649700 F: 01922 649802 E: strimechsales@btconnect.com www.strimech.co.uk
Company Registration No. 1247524

